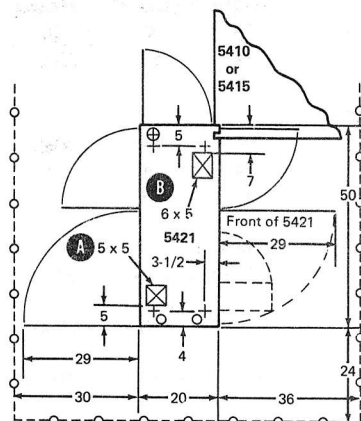


5421 PRINTER CONTROL (FOR 1403 ATTACHMENT)

Plan View



A For cables from 1403.

B For cables from 3411 and 3284.

Specifications

Dimensions:

	Width	Depth	Height
Inches	50	20	29
Centimeters	127	51	74

Service Clearances:

	Front	Rear	Right	Left
Inches	36	30	*	24
Centimeters	91	76	*	61

Weight: 405 lb (185 kg)

Heat Output/hr: 1800 Btu (550 kcal)

Airflow/min: 250 ft³ (7 m³)

Power Requirements:

Voltage	208/230 ± 10%
kVA	1.0 @ 60 Hz, 2.2 @ 50 Hz
Phases	3
Plug Type	D
Power cord style	B1

Operating Environment:

Temperature	60° to 100° F (16° to 38° C)
Relative humidity	8% to 80%
Maximum wet bulb	78° F (26° C)

Nonoperating Environment:

Temperature	50° to 110° F (10° to 43° C)
Relative humidity	8% to 80%
Maximum wet bulb	80° F (27° C)

* Right service clearance included in overall system requirements.

